



INADIS

ANNUAL REPORT 2022



## TABLE OF CONTENT

1.	ABOUT THE INDONESIAN INSTITUTE OF ADVANCED INTERNATIONAL STUDIES.....	3
1.1	Our Vision .....	3
1.2	Our Mission.....	3
1.3	Our Values.....	3
2.	EVENTS IN COOPERATION WITH EXTERNAL PARTIES.....	4
2.1	Webinar .....	4
2.2	Limbah Medis & Pandemi Covid-19 (Medical Waste & the Covid-19 Pandemic).....	4
2.3	What and When .....	4
2.4	Summary of Event.....	4
2.5	Guest Lecture: Penulisan, Presentasi, dan Publikasi Akademik (P3A) – Memahami Pembangunan Keberlanjutan Melalui Penulisan Akademik (Understanding Sustainable Development Goals through Academic Writing) .....	5
2.6	What and When .....	5
2.7	Summary of the Event.....	5
2.8	WEBINAR Dinamika Kejahatan Lintas Batas Negara di Asia Tenggara (Transnational Crime Dynamic in Southeast Asia).....	6
2.9	What and When .....	6
2.10	Summary of Event.....	6
3.	SOCIAL MEDIA ACTIVATION .....	27
3.1	INSTAGRAM .....	27
3.2	FACEBOOK.....	27
3.3	YOUTUBE.....	28
3.4	WEBSITE .....	28
4.	INADIS FINANCIAL UPDATES .....	29
4.1	FINANCIAL OVERVIEW.....	29
4.1.1	2022 Financial Overview .....	29
4.2	OPERATING RESULT .....	29
4.3	Operating Expenses .....	29
4.4	Statement of Financial Position .....	29
5.	PUBLICATION .....	36
5.1	INADIS ANTHOLOGY .....	36
5.2	INADIS BRIEF .....	36
5.3	INADIS BLOG .....	36

## 1. ABOUT THE INDONESIAN INSTITUTE OF ADVANCED INTERNATIONAL STUDIES

Indonesian Institute of Advanced International Studies (INADIS) is a non-profit, public policy research organization based in Jakarta. Our focus is on public policies that relate to international relations, particularly with regard to international political economy, area studies and strategic studies issues.

### 1.1 Our Vision

- To create a society that is aware of contemporary issues which are affecting their lives, as well as the formulation, mechanism, and impacts of public policies.
- To become the leading public policy research institute with multidisciplinary approaches.

### 1.2 Our Mission

- To initiate open dialogues with the aim of information sharing so as to create knowledge on contemporary civil culture issues that relate to general society through publications and interactive programs.
- To provide the government of Indonesia with domestic and foreign policy analysis of value to the nation as a whole.

### 1.3 Our Values

- **Multidisciplinary**  
We are a team comprised of people from diverse background and disciplines who share the same goal. We use our different backgrounds to provide new approaches and perspectives that will complement each other's particular knowledge.
- **Independent**  
We pride ourselves in providing an objective view in our research and analysis. We report findings and recommendations that are based on an unbiased empirical inquiry.
- **Collaborative**  
We collaborate with experts, governments, and private sectors in our research and analysis.

## 2. EVENTS IN COOPERATION WITH EXTERNAL PARTIES

In the year of 2022, INADIS collaborated with Universitas Indonesia, Universitas Kristen Indonesia, ISAFIS, Kementerian Pendidikan, Kebudayaan, Riset dan Teknologi (The Ministry of Education, Culture, Research, and Technology), Mentawai Institute, Mbloc, Universitas Negeri Jakarta and many more.

In collaboration with the above-mentioned parties, INADIS successfully held

### 2.1 Webinar

### 2.2 Limbah Medis & Pandemi Covid-19 (Medical Waste & the Covid-19 Pandemic)

### 2.3 What and When

This event was held on the 26<sup>th</sup> of February 2022 in collaboration with FISIPOL THINKERS CLUB Universitas Kristen Indonesia. Farhan Julianto (Researcher from INADIS) was invited to talk and gave some insights regarding the issue around medical waste in correlation with the Covid-19 pandemic.

**WEBINAR** FISIPOL THINKERS CLUB  
"LIMBAH MEDIS & PANDEMI COVID-19"

**SPEAKERS**

**Dr. Verdinand Robertua, S. Sos., M. Soc., Sc.**  
Pjs. Dekan Fisipol  
Dosen Hubungan Internasional  
Universitas Kristen Indonesia

**Ardhi Arsala Rahmani M. Si, M. P. P.**  
Mahasiswa Doktor Ilmu Kesehatan Masyarakat,  
Universitas Indonesia

**Farhan Julianto**  
Hubungan Internasional, Universitas Indonesia  
Researcher, INADIS

**LET'S JOIN**  
VIA ZOOM MEETING

BENEFIT  
FREE REGISTRATION  
+ GET E-CERTIFICATE

REGISTER NOW!!  
[HTTPS://FORMS.GLE/ISJKiB36Sk854EACB](https://forms.gle/ISJKiB36Sk854EACB)

SABTU  
**26**  
FEBRUARI 2022  
PUKUL :  
**10.00-11.35**

for more information visit  
@FisipolThinkersclub

CONTACT PERSON :  
081283746221 - Sandra

### 2.4 Summary of Event

This webinar invited three speakers, two speakers were from Universitas Kristen Indonesia (UKI) and one other speaker was from INADIS. Dr. Verdinand Robertua from UKI started this webinar by stating how the medical waste affected the livelihood of people who live close to the riverbank and the sea as this medical waste has contaminated the water in this area.

As the second speaker of this webinar, Farhan Julianto (the researcher from INADIS) gave an argument that medical waste should not be seen as a threat. This issue can still be managed well by the government and this medical waste will not have an immediate effect on its surroundings, or furthermore to the society. All that has to be done in the meantime is to give out the PSA about how important it is to be able to separate waste to avoid such occurrences happening in the future.

Lastly, Ardhi Arsala Rahmani (a student from UKI's medical faculty) stated that the medical waste resulted from the surge of covid cases will not immediately affect people who lives in the city, but it will affect people who lives around the sea. He also mentioned that with the proper knowledge and proper countermeasures, this effect can be avoided.

## 2.5 Guest Lecture: Penulisan, Presentasi, dan Publikasi Akademik (P3A) – Memahami Pembangunan Keberlanjutan Melalui Penulisan Akademik (Understanding Sustainable Development Goals through Academic Writing)

### 2.6 What and When

This event was held on the 17<sup>th</sup> of May. Kanya Damarcanti, INADIS Program Director, was invited to present some insights about academic writings and how to develop ideas to solve problems with Sustainable Development Goals in mind.

The poster is titled 'KULIAH TAMU' and focuses on 'Penulisan, Presentasi, dan Publikasi Akademik (P3A)'. The main theme is 'Memahami Pembangunan Keberlanjutan Melalui Penulisan Akademik'. It lists two speakers: Kanya Damarcanti, MA, Director of the INADIS Program, and Darynaufal Mulyaman, S.S., M.Si., an international relations lecturer at UKI. The event is scheduled for Tuesday, May 17, 2022, from 11:00 to 13:30 WIB, and will be held on Microsoft Teams. A QR code and a link (<https://bit.ly/KuliahTamup3A>) are provided for registration.

### 2.7 Summary of the Event

At the beginning of the presentation, Kanya divided the participants into groups and asked them to analyze an article under the title "Effect of COVID-19 on the Sustainable Development Goals (SDGs)". Afterwards Kanya asked the participants to discuss their findings from the said article.

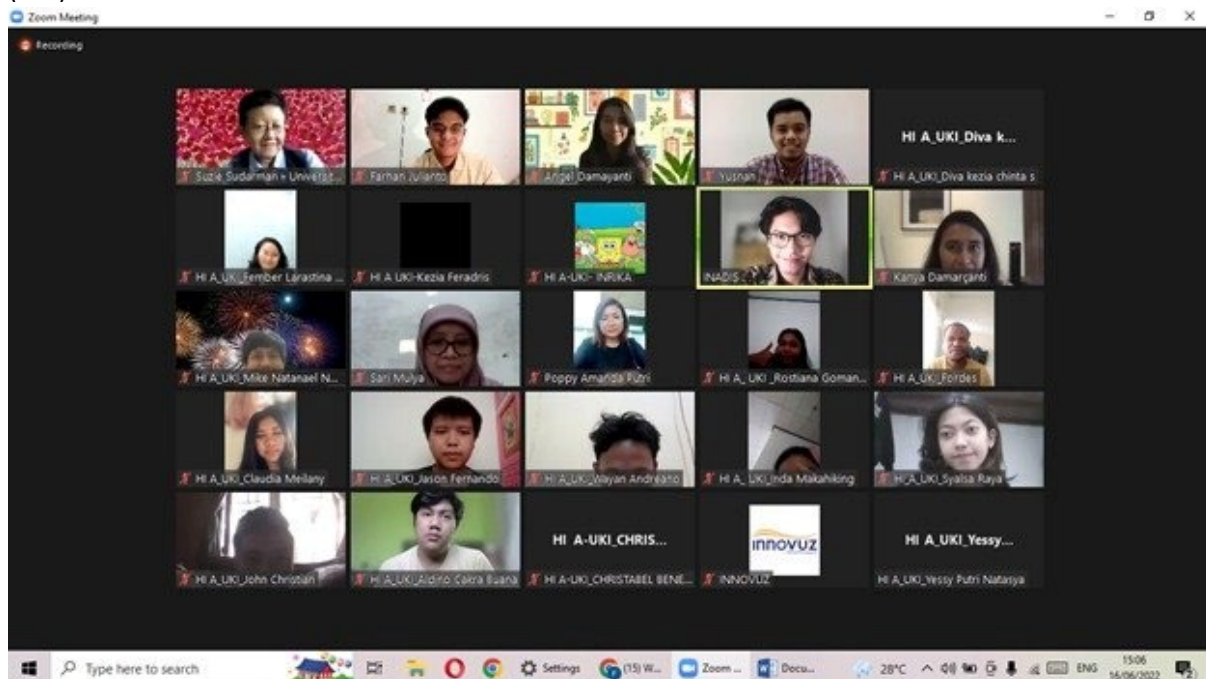
In the next session, she explained the importance of academic writings (including the theory and step by step), and also what to prepare when the participants plan to write one. As the session continues, Kanya always pitches out some questions to ensure that the participants actively participated in the session.

Afterwards, the participants were given the opportunity to ask questions about academic writings. Kanya also asked the participants to write an article related to SDGs as an individual task by the end of the session.

## 2.8 WEBINAR Dinamika Kejahatan Lintas Batas Negara di Asia Tenggara (Transnational Crime Dynamic in Southeast Asia)

### 2.9 What and When

This webinar was held with the cooperation of INADIS, Universitas Nahdlatul Ulama Kalimantan Timur (UNU Kaltim) and Universitas Kristen Indonesia (UKI) Jakarta. This webinar invited three guest speakers, they were Farhan Julianto from INADIS, Sari Mulyani (UNU Kaltim), and Angel Damayanti (UKI).



### 2.10 Summary of Event

This webinar started with Farhan Julianto's presentation with the title '*Ancaman Kelompok Paramiliter di Laut Cina Selatan*' (Paramilitary Group's Threat at South China Sea). In his presentation, Julianto explained about the fishing regulation and laws in this area (Code of Conduct), and how dangerous it would be if there is no firm regulation enacted in this area. He also stated that there are some narratives that has been circulated about the South China Sea.

The second presentation was given by Sari Mulyani with the title '*Kerja Sama Trilateral Indonesia, Malaysia, dan Filipina dalam Kemanan Laut (Kasus Perompakan Kapal Batu Bara Indonesia)*' (Trilateral Cooperation among Indonesia, Malaysia, and Philippines about Ocean Safety (Case of the piracy of an Indonesian Coal Ship)). Mulyani raised the issue of the case that happened in Sulu sea back in 2016, in the area that's considered as unsafe in Indonesia. This event pushed the cooperation to be done among these three countries to ensure the safety of the maritime area.

Lastly, Angel Damayanti gave a presentation under the tile of '*Islamofobia: Ancaman terhadap Keamanan Insani di Asia Tenggara*' (Islamophobia: Threat of Human Security in Southeast Asia.) In her presentation, she explained how this phenomenon might affect the stability of ASEAN region. As



a countermeasure against this issue, Damayanti encouraged a dialogue to be conducted among ASEAN countries, the neighboring countries, and humanitarian commission in Southeast Asia.

## 2.3. JOURNAL

### 2.3.1. ASEAN Insights: The Case of Further ASEAN Integration Through the ASEAN-ROK Engagement



This article explained that ASEAN should reform itself and strengthen its cooperation on issues where there are less contention and more convergence of interest, such as food security, maritime security, and pandemic preparation. It also recommended that ASEAN should seek alternative partners to reduce dependency on super powers. South Korea, as a fellow middle power, can help ASEAN further its integration and cooperation through its New Southern Policy (NSP), which focuses on economic, political, and cultural pillars. This article also highlights the benefits of enhancing ASEAN-South Korea cooperation for both sides, such as increasing mutual trust, protecting common interests, diversifying economic opportunities, and promoting regional stability. It also emphasizes the importance of middle power cooperation in the face of global rivalries and challenges.

## 2.4. INTERVIEW



<https://www.youtube.com/watch?v=VCXRjaD6n84>

After Russia launched attacks on several border regions of Ukraine. Ukraine's Foreign Ministry, meanwhile, declared it was ready to defend itself.

In this video, we discussed the impact of the war between Russia and Ukraine on the world, especially Indonesia. This interview was conducted with Suzie Sudarman, UI International Relations observer, and member of the INADIS Board of Trustees.



<https://www.youtube.com/watch?v=e1sCiX4aCwE>




This video presented the views of Suzie Sudarman, a member of the INADIS Board of Trustees, regarding the Russian invasion of Ukraine.



<https://www.youtube.com/watch?v=AftnSytungk>

This video presented the views of Suzie Sudarman, a member of the INADIS Board of Trustees, regarding the shooting in New York, United States.



 <p><a href="https://www.youtube.com/watch?v=RbniKX5yiJY">https://www.youtube.com/watch?v=RbniKX5yiJY</a></p>	<p>This video presented the views of one of INADIS's experts, Suzie Sudarman, who was invited by MNC News Now on May 24, 2022 to give her response on the polemic of raising the LGBT flag at the British Embassy.</p>
 <p><a href="https://www.youtube.com/watch?v=fDDsywiMSEU">https://www.youtube.com/watch?v=fDDsywiMSEU</a></p>	<p>This video presented the views of the Executive Director of INADIS, P. L. E. Priatna. During the discussion, Priatna expressed his views on the role of the United States in the Russia-Ukraine conflict and what Indonesia can do to respond to the conflict.</p>
 <p><a href="https://www.youtube.com/watch?v=15LqwM9Xfds">https://www.youtube.com/watch?v=15LqwM9Xfds</a></p>	<p>This video presented the views of INADIS Research Fellow Darynaufal Mulyaman on South Korean public diplomacy. In addition, Mulyaman also conveyed insights about the spread of South Korean pop culture or known as Hallyu. The interview took place in the middle of BTS's visit to the White House.</p>



<https://www.youtube.com/watch?v=b-SH4cEqv7o>

This video presented the views of the Director of the Center for Security and Foreign Affairs Studies UKI and Strategic Studies Expert for INADIS Angel Damayanti on the existence of Khilafatul Muslimin in Indonesia. Damayanti explained the topic in a Lunch Talk event held by Berita News Channel on June 17, 2022.



<https://www.youtube.com/watch?v=zbRwnj0rHEw>

This video presented the views of INADIS Executive Director Drs. P.L.E. Priatna, M.A. at the CROSSCHECK event held by MEDCOM.ID entitled "JOKOWI'S BRAVE MISSION: RECONCILE RUSSIA - UKRAINE".



<https://www.youtube.com/watch?v=sCAzty7BFll>

President Joko "Jokowi" Widodo visited Ukraine and Russia to try to mediate the conflict between the two European countries, as well as to seek peace. The following is the analysis of board member and INADIS expert Suzie Sudarman regarding Jokowi's peace mission.



This video presents the views of INADIS Executive Director Drs. P.L.E. Priatna, M.A. at the CROSSCHECK event held by MEDCOM.ID entitled "Russian Food Path and Ukraine-Russia Peace Mission Joko Widodo".

[https://www.youtube.com/watch?v=pYYj0\\_tszM0](https://www.youtube.com/watch?v=pYYj0_tszM0)



President Joko Widodo visited Russia and Ukraine on a peace mission. However, it was reported that Russia was increasingly attacking Ukraine after Jokowi's visit. So did Jokowi's peace mission fail? Check out INADIS expert Suzie Sudarman's opinion on the issue.

<https://www.youtube.com/watch?v=yRTHhGzaCdw>



The visit of Nancy Pelosi, the speaker of the US House of Representatives, to Taiwan caused the situation in the Eastern Block (China, Russia, and North Korea) to heat up. Will this situation develop into war? Here's what INADIS Expert Suzie Sudarman thinks about this.

<https://www.youtube.com/watch?v=kEyJvtRzAE>





US House of Representatives Nancy Pelosi has completed her visit to Taiwan. By some, Pelosi's visit was interpreted as an attempt by the US to pressure China after failing to pressure Russia. Here's what the Executive Director of INADIS said.

<https://www.youtube.com/watch?v=gHbqRE7xWkU>



After the passing of Queen Elizabeth II, the throne of England was passed on to Charles, her son. How does this affect the future of the UK? Check out the response of INADIS expert, Suzie Sudarman about this.

<https://www.youtube.com/watch?v=cxkules2yZA>



After the passing of Queen Elizabeth II, the British throne was succeeded by King Charles III. Various political dynamics are predicted to occur in Britain during this transition period. This is the explanation of INADIS expert, Suzie Sudarman in an interview with KOMPAS TV.

<https://www.youtube.com/watch?v=N1ygVIUvjMQ>



On November 9, 2022, Darynaufal Mulyaman, who is a Research Fellow from the Indonesian Institute of Advanced International Studies (INADIS), had the opportunity to be interviewed by CNN Indonesia about the recent heated conditions of South and North Korea.

<https://www.youtube.com/watch?v=cZmixUF9Ryl>



On November 16, 2022, Suzie Sudarman, who is an Area Study Expert from the Indonesian Institute of Advanced International Studies (INADIS), had the opportunity to be interviewed by Metro TV after the G20 Summit in Bali.

<https://www.youtube.com/watch?v=dwNAFd4RNB1>



On November 16, 2022, Suzie Sudarman, who is an Area Study Expert from the Indonesia Institute of Advanced International Studies (INADIS), continued the conversation on Metro TV about President Joko Widodo's meeting with China on the sidelines of the G20 Summit.

[https://www.youtube.com/watch?v=bTFsM4\\_JwHY](https://www.youtube.com/watch?v=bTFsM4_JwHY)





On November 17, 2022, Suzie Sudarman who is an area study expert from the Indonesian Institute of Advanced International Studies (INADIS) gave her views on Metro TV regarding the Polish missile incident.

<https://www.youtube.com/watch?v=pEvyIhejUJw>

## 2.5. DISTRAKSI Vol. III



DISTRAKSI stands for Diskusi (Discussion), Interaksi (Interaction), and Kreasi (Creation). The program begins with speaker(s) explaining about decided topic(s), often which is the result of rigorous academic research or analysis of public policy, while simultaneously building the ambience that would encourage participants to actively participate in asking and/or presenting their ideas. It is hoped that a series of thoughtful discussions occur during the exchanges.

To help participants further comprehend the topic(s), the INADIS team previously designed one or more relevant, hands-on activities, which usually come in the form of art and/or craft activities. The participants are required to select one of the activity options (if there is more than one option) before attending the program.

DISTRAKSI Vol. III is the third activity of this series, and in 2022 working alongside with The Ministry of Education, Culture, Research, and Technology and Mentawai Institute, INADIS successfully held an exhibition of Mentawai Art and Culture in Mbloc Space, Southern Jakarta.

The primary objectives of this activity were as follows:

1. To provide education and promote a deeper understanding of the true meaning of *Arat Sabulungan*, particularly for the general public, including the Mentawai Tribe and relevant stakeholders.
2. To serve as an earnest endeavor for the preservation, exploration, and enhancement of literacy, addressing the prevailing deficiency in cultural literacy and general information about the Mentawai Tribe.

This activity was scheduled to take place at:

- **Venue** : Mbloc Space & Museum Kebangkitan Nasional
- **Dates** : Friday, 25 November 2022, and Tuesday, 29 November 2022– Wednesday, 30 November 2022
- **Time** : 09:00 - 21:00 WIB
- **Theme** : "*Arat Sabulungan: Sustained Way of Life of the Mentawai Tribe*"
- **In collaboration with:** Ministry of Education, Culture, Research and Technology (Kemendikbud), Mbloc, ISAFIS and Universitas Negeri Jakarta

#### 2.5.1. DISKUSI (Discussion)

This first part of DISTRAKSI activities was DISKUSI (Discussion) where it was presented in a seminar. The seminar convened as a platform for discussing *Arat Sabulungan*, transcending its characterization, merely as a belief system to elucidate its profound implications as a fundamental way of life for the Mentawai Tribe. *Arat Sabulungan* governs myriad aspects of the Mentawai way of life, including traditional ceremonies, the utilization of natural leaves for medicinal purposes, principles of survival, reverence for the natural universe (practicing judicious resource utilization), faith in the custodian of life (*Taikamanua*), and the entirety of indigenous community activities.



Distinguished speakers, proficient in their respective fields, were invited in the seminar to impart valuable insights to the younger generation, fostering a deeper understanding of Mentawai culture. The three central topics under discussion were "The Mentawai Tribe from an Anthropological View," "The Role of Mentawai Tribe Life in Sustainable Development Goals," and "Ethnobiology and Micro Enterprises." These themes collectively sought to comprehensively scrutinize the relevance of Mentawai life vis-à-vis the UN Sustainable Development Goals. The anticipated outcomes of this discourse aspire to cultivate a novel intellectual framework concerning the role of the Mentawai Tribe in the advancement of national culture, where *Arat Sabulungan* serves as a protective belief for the tribe.

In addition to the seminar, an exhibition showcasing Mentawai tribal culture was featured, incorporating documentary films illustrating traditional rituals, Mentawai tattoo demonstrations, and photographic displays. This integrated approach was aimed to actively engage the younger generation in contributing to the preservation of Mentawai culture and the broader cultural heritage of Indonesia.

The eminent speakers contributing to the seminar on the theme, "The Relevance of Mentawai Tribe Life in Ethnobiology's View of the SDG Number 15 Program," are detailed below:

• **Prof. Dr. Marina Silalahi, S.Pd., M.Si**

Tema : "Peran Kehidupan Suku Mentawai Terhadap Program SDG Number 13"

• **Dr. Verdinan Robertua Siahaan**

Tema : "Peran Kebudayaan Suku Mentawai Terhadap Program Pembangunan Keberlanjutan"

• **Sari Fitriani, S.Si., M.B.A., M.Sc. (Cand.)**

The diverse backgrounds and expertise of these speakers were aimed to enrich the seminar with multidimensional insights, fostering a comprehensive understanding of the intricate relationship between the Mentawai Tribe's way of life and the Ethnobiological principles embedded in the SDG Number 15.

## **2.5.2. INTERAKSI dan KREASI (Interaction and Creation)**

This part of the activities showcased the cultural and art exhibition curated by Aprina Murwanti, Ph.D.

### **Mentawai Tribe Cultural Showcase**

This array of events encompassed exhibitions spotlighting the rich cultural tapestry of the Mentawai tribe. The exhibitions featured an array of items ranging from artifacts and musical instruments to hunting gear and traditional attire. The primary objective of these exhibitions was to foster an intimate understanding and reinterpretation of the Mentawai tribe's culture through direct experiential engagement. The series of exhibition activities unfolds as follows:

#### **2.5.2.1 Mentawai Tribe Artifact Showcase**

This particular exhibition will unveil an assortment of Mentawai tribal artifacts, directly sourced from the Mentawai Islands. On display are various items, including musical instruments, hunting implements, and artifacts utilized in the Arat Sabulungan ritual. Additionally, traditional clothing worn by the Mentawai tribe will be showcased. Given the limited dissemination of these artifacts beyond the Mentawai Islands, this exhibition stands as a pivotal attraction, offering a unique opportunity to delve deeper into the intricacies of Mentawai tribal culture.

## **EXHIBITION ITEM LIST**

### **1. *Sosoat*: The Traditional Hunting Spear of the Mentawai Tribe**

The *Sosoat*, commonly known as the spear, is a traditional tool extensively employed by the Mentawai Tribe during forest hunting endeavors. Crafted from meticulously selected wood indigenous to the Mentawai tribe, this spear exhibits a distinctive quality. Its piercing tip, forged from white iron, attains an exceptional sharpness. The spearhead is often coated with traditional poison, serving its purpose effectively when immobilizing large game, particularly pigs, at close proximity. The *Sosoat* stands as a testament to the craftsmanship and strategic ingenuity employed by the Mentawai Tribe in their traditional hunting practices.



## 2. *Pati'ti*: Tools for Traditional Mentawai Tattoos

*Pati'ti*, the traditional tattoo tools, form an integral set employed in the intricate process of creating traditional Mentawai tattoos. This ensemble of tools includes a liquid container ingeniously crafted from coconut shells, a wooden apparatus for holding the tattoo needle, a wooden paddle, and tattoo ink meticulously composed of a blend of charcoal and sugarcane juice. Together, these tools embody the essence of Mentawai tattoo artistry, reflecting both cultural significance and skilled craftsmanship in the creation of traditional body art.



## 3. Hunted Skulls in Mentawai Tradition

Hunted skulls refer to the remains of animals such as monkeys, pigs, and deer. These skulls are commonly displayed in Mentawai traditional houses, where they serve the purpose of "spirit toys." Acting as symbolic offerings for ancestral spirits expected to visit the home, these skulls carry cultural significance. Additionally, the act of hanging the skull of a hunted animal goes beyond its spiritual aspect; it becomes a tangible expression of hope and a prayerful ritual for the *uma* (house) owner. This gesture symbolizes a wish for a successful return of game during future hunting endeavors.



## 4. *Jejeneng*: The Small Brass Bell in Mentawai Music

*Jejeneng*, often referred to as a small bell, stands as a significant musical instrument crafted from brass within Mentawai culture. Its role is pivotal, serving as an accompaniment to the singing of *Sikerei*, the traditional elders, during rituals and healing ceremonies. The



resonant tones of the *Jejeneng* contribute to the atmospheric and spiritual ambiance of these cultural practices, enhancing the ceremonial experience with its distinctive sound.



##### 5. ***Babaklu*: The Traditional *Sikerei* Bag**

*Babaklu*, also known as the traditional *Sikerei* bag, serves as a sacred repository for the items essential to a *Sikerei*. This meticulously crafted bag is constructed from dried and carefully selected sago fronds. Its purpose is to safeguard the sacred belongings integral to *Sikerei* rituals and practices, encapsulating both cultural significance and the meticulous craftsmanship of the Mentawai people.



##### 6. ***Koraibi*: The War Shield of the Mentawai Islands**

*Koraibi*, commonly known as a shield, serves as essential body protection during times of conflict in the Mentawai Islands. While significant large-scale wars may not have occurred, the history of the Mentawai Islands recounts instances of *pangayau*, acts of revenge prompted by the loss of a family member. The shield holds paramount importance during these retaliatory endeavors, acting as a protective barrier against arrows aimed at members of the Mentawai tribe seeking retribution. Its presence signifies a historical and cultural context, embodying the preparedness and resilience of the Mentawai people in times of conflict.



## 7. **Kabit: Traditional Attire from Tree Bark**

*Kabit* represents traditional clothing crafted from tree bark within the cultural repertoire of the Mentawai tribe. This unique garment undergoes a meticulous process, involving the peeling and beating of tree bark until it attains a smooth texture. Subsequently, the bark is dried, rendering it suitable for use as fabric. *Kabit* stands as the authentic and original clothing of the Mentawai tribe, symbolizing both cultural heritage and the resourceful craftsmanship that defines their traditional attire.



## 8. **Silogui: Traditional Arrows in Mentawai Culture**

*Silogui*, commonly known as arrows, constitutes traditional tools crafted from bamboo tubes, palm tree trunks, *katu* skin, and arrowheads. This traditional weaponry takes three distinct forms: "*rou-rou*," referring to an individual arrow; "*bug-bug*," denoting a quiver of arrows; and "*togat silogui*," representing the arrows collectively. Similar to the crafting of spears, the arrowheads are fashioned from robust tree materials or brass, often coated with potent and lethal poison. The *Silogui* embodies both the artistry and functionality deeply embedded in Mentawai culture, serving as a testament to their resourceful craftsmanship in traditional tools and weaponry.



## 9. **Jaraik: Mystical Ornament in the Uma**

*Jaraik* stands as a mystic ornament frequently linked to magical powers within an *uma*. While *Jaraik* manifests in various forms, the core essence remains relatively uniform. Typically, a monkey skull is affixed within the *Jaraik*, and it is strategically positioned at the entrance of the *uma*. This mystical embellishment symbolizes a fusion of cultural significance and spiritual beliefs, contributing to the ambiance of the *uma* and its perceived connection to magical energies.



#### 10. *Leggeu*: Traditional River Fishing Tool

*Leggeu* represents a traditional fishing tool employed for catching fish in rivers. Crafted from palm tree fronds, the *Leggeu* undergoes a specific preparation process. The palm fronds are soaked and then dried, often through smoking over a pile of firewood, enhancing their durability for prolonged use. This meticulous crafting method ensures the longevity of the *Leggeu*, making it a reliable and enduring tool for traditional river fishing practices.



#### 11. *Dedeibu*: Traditional Water Drawing Tool for Sago Processing

*Dedeibu* serves as a traditional tool specifically designed for drawing water during the sago processing procedure. This tool is ingeniously crafted from a combination of sago fronds, bamboo sticks, and rattan, the latter serving as a binding material. The construction of *Dedeibu* reflects the resourcefulness of traditional methods, optimizing natural materials to facilitate the essential task of drawing water for the processing of sago.



#### 12. *Paluga*: Traditional Rowing Tool

*Paluga* stands as a traditional rowing tool crafted from carefully selected wood. In the various activities of the Mentawai tribe, the role of *Paluga* is integral, closely linked to the presence of *Uma* on the riverbank. This traditional rowing implement plays a crucial role, emphasizing its significance in facilitating activities and transportation along the river for the Mentawai community.



### 13. *Kajeumak*: Traditional Musical Instrument of the Mentawai Islands

*Kajeumak* is a traditional musical instrument crafted from palm tree trunks adorned with snake skin. Its purpose is to provide accompaniment to traditional dances and ritual ceremonies within the cultural practices of the Mentawai Islands. Played by being struck like a drum, the *Kajeumak* holds a significant role in enhancing the rhythmic elements of cultural performances, contributing to the vibrant and ceremonial ambiance of the Mentawai traditions.



### 14. *Palitai*: Traditional Knife with Distinctive Features

The *Palitai* features a straight, double-edged blade, distinguishing it with a unique design. Its handle is characterized by a long, slender, and curved shape. This traditional knife possesses a smooth blade sharpened on both sides, running parallel to each other. The two sharp edges converge seamlessly from the base to the tip, forming a single sharp point. Additionally, a raised rib is present in the middle, contributing to the distinctive and functional design of the *Palitai*.



### 15. *Lulak*: Wooden Food Container

*Lulak* is a food container meticulously crafted from wood, carved and shaped for practical use. This versatile container finds application in various culinary contexts. Typically, *Lulak* is employed to serve *subbet*, a mixture of banana or taro dough with coconut. Additionally, it is utilized in the processing of sago flour and serves as a vessel for presenting pork or chicken during celebratory gatherings and parties. The thoughtful design and craftsmanship of *Lulak* contribute to its functionality in diverse culinary and cultural settings.



## 16. *Sikerei* Beads: Adornments for Ritual Attire

*Sikerei* beads encompass various types, each serving a distinct purpose in the adornment of *Sikerei* attire during rituals. These bead types include: *Luat* (Headband), worn around the head, the *luat* adds a decorative element to the *Sikerei's* headdress. *Ngalou* (Necklace), draped around the neck, the *ngalou* contributes to the overall ornamentation of the *Sikerei's* ritual attire. *Letcu* (Bracelet), adorning the wrists, *letcu* serves as a bracelet, enhancing the visual appeal of the *Sikerei's* ceremonial ensemble. *Raksok* (Brass Beads), A specific type of bead made from brass, the *raksok* is employed for its unique characteristics in *Sikerei* embellishments. These beads collectively play a significant role in enhancing the aesthetic appeal and cultural symbolism of a *Sikerei's* attire during sacred rituals.



### 2.5.2.2. *Ruang Titi*: Traditional Tattooing Venue

An intriguing activity offered during the event is "*Ruang Titi*," a traditional tattooing venue distinctive to the Mentawai tribe. Participants have the opportunity to choose from a selection of traditional tattoo designs provided by Mentawai tattoo artists. This activity aims to acquaint visitors with the unique culture of the Mentawai tribe through the experience of receiving traditional tattoos. It is anticipated that this interaction will foster a deeper connection between the tattoo artist and the individual getting tattooed.

#### **Details of the *Ruang Titi* Activities:**

- Tattoo Images : Traditional tattoo options are available (Temporary).
- Time :Friday, November 25, 2022.
- Hours : 09:00 – 21:00 WIB.





### 2.5.2.3 *Turuk Lagai* Dance

The *Turuk Lagai* dance derives its name from "*turuk*," meaning dance, and "*Lagai*," representing a specific region. This traditional dance, featuring the *Uliat Bilou* and *Uliat Manyang* dances (Monkey Dance and Eagle Dance) from *Sanggar Koyahen*, illustrates the profound connection between humans and nature. The dance serves to raise awareness about the close ties of Mentawai culture to positive environmental values.



### 2.5.2.4. Mentawai Tribe Traditional Ritual Photography Exhibition

This segment showcased a curated selection of photographs depicting the life of the Mentawai tribe. With the theme "The Life of the Mentawai Tribe," the exhibition provided a glimpse into the daily lives of the Mentawai people. Through these images, visitors can witness the reality of Mentawai life, allowing them to appreciate how the sustainable practices embedded in *Arat Sabulungan* hold significance for both the Mentawai community and exhibition attendees.

#### **2.5.2.5. Screening of the Documentary Film "Mentawai Ritual"**

An exclusive screening featured the documentary film "Mentawai Ritual," offering an intimate portrayal of the traditional rituals and daily life of the Mentawai tribe. This premiere was the result of the creative work of Dedi Juliasman Sakatsilak, a cultural activist, and Director of the Mentawai Institute. The film provided a unique perspective on the rituals and lifestyle of the Mentawai tribe, with a particular focus on *Arat Sabulungan*. Through this documentary, viewers gained insight into the profound significance of *Arat Sabulungan* in the Mentawai community.

#### **2.5.3. Participants**

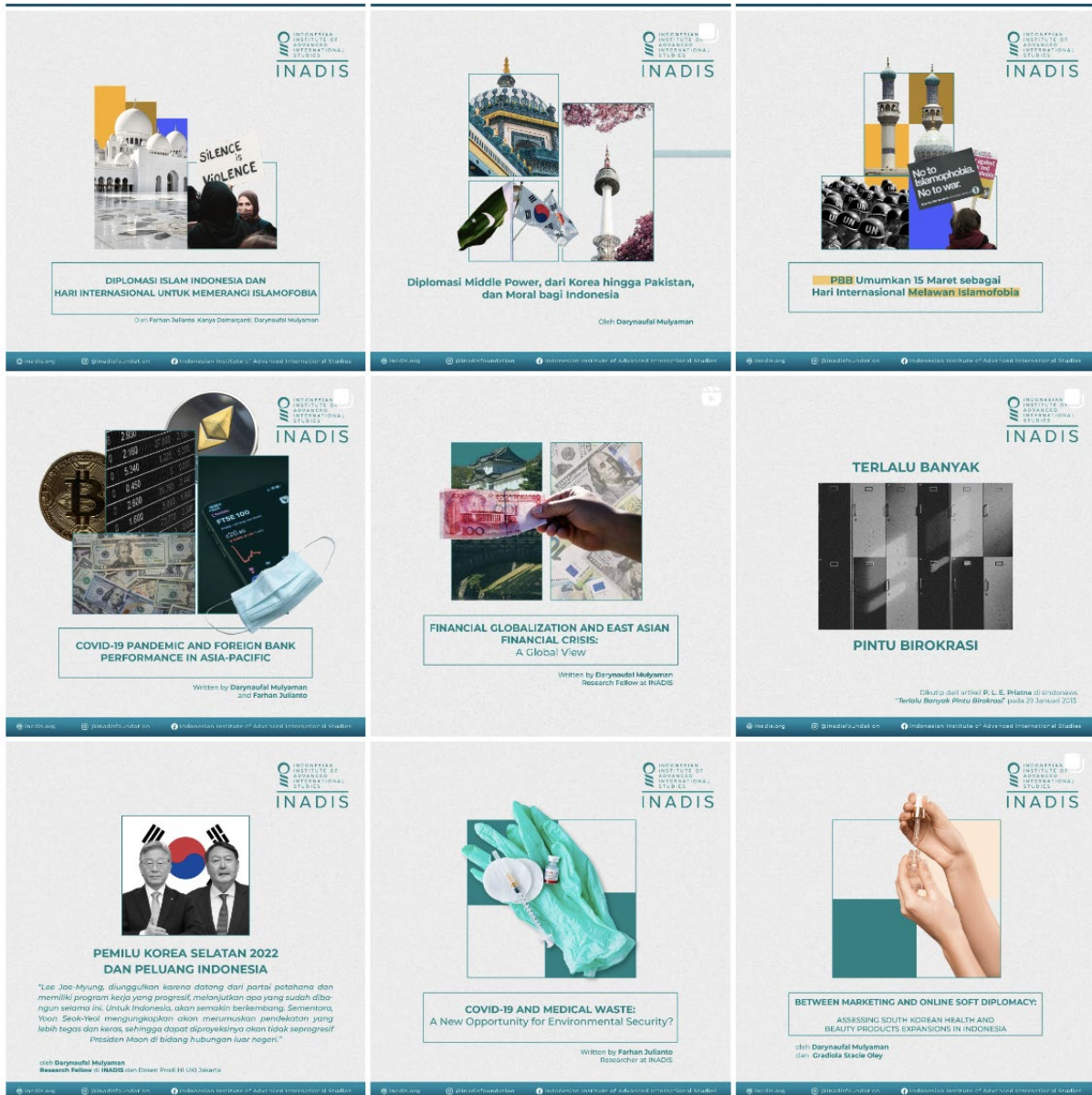
The seminar welcomed a diverse array of participants, encompassing members of the Mentawai indigenous community, the general public, academics, students, practitioners, and various stakeholders. This inclusive approach extended beyond national borders, attracting students from overseas who actively contributed to the event. The seminar and exhibition series witnessed a robust attendance, with over 400 individuals representing a wide spectrum of backgrounds and interests. Notably, the majority of participants were enthusiastic students who actively engaged in the seminars and exhibitions. Members of the Mentawai indigenous community also played a significant role, offering valuable insights and aspirations during seminar discussions. The Ministry of Education, Culture, Research, and Technology, along with the Director of Faith and Indigenous Communities and their staff, further enriched this cultural event with their presence and active participation.



### 3. SOCIAL MEDIA ACTIVATION

#### 3.1 INSTAGRAM

Since 2018, INADIS has actively been using INSTAGRAM under the name @inadisfoundation for sharing information and any updated news about the organization.



#### 3.2 FACEBOOK

Under the username of Indonesian Institute of Advanced International Studies, Facebook was used as another social digital media platform for sharing news and information surrounding the international and domestic policies, also any updated news and activities regarding INADIS.



### 3.3 YOUTUBE

On 2022, INADIS Executive Director and Trustee Members had the opportunity to be interviewed by various media to present their opinions about certain issues regarding social political events happening in Indonesia and across the globe.

### 3.4 WEBSITE

This website is used to showcase the works that had been done, future for the organization, also ongoing activities. Audiences could also access our writings and research through our websites. Most of all the publications of INADIS is being showcased in this site. All social media platforms are also linked through our main website under the address <http://inadis.org>.



## **4. INADIS FINANCIAL UPDATES**

### **4.1 FINANCIAL OVERVIEW**

#### **4.1.1 2022 Financial Overview**

INADIS was established in 2017 with a capital of IDR 11,394,000.00. Given there is still no significant contribution towards INADIS financial position; most of the funds used for the operational and project activities to date were fully supported from shareholder(s) loans, Grants/Fundings from Clients, and Adyatmika Sakti Nusantara's facilities and infrastructure (since INADIS shares the same office space as the company).

### **4.2 OPERATING RESULT**

#### **4.2.1 Revenues**

In 2022, INADIS received IDR 72,997,500 in funds to facilitate Seminars, Workshop and also to conduct Research. A total of IDR 166,898,895.00 was also received from Shareholder's loan.

#### **4.3 Operating Expenses**

Operating expenses cover all the direct cost of running projects as well as our management and general fund raising costs.

Total operating expenses as of 31 December 2022 amounted to IDR 225,092,466.40 of which:

- IDR 167,631,489.40 was for Operations Expenses
- IDR 57,460,977.00 was for Project Expenses

Total income from operations amounted to IDR 152,094,966.40 (=total operating expenses – gross profit: IDR 225,092,466.40 – IDR 72,997,500.00).

Net profit/loss (before tax) amounts to IDR 152,719,616.40 (=income from operation + total other income & expenses: IDR 152,094,966.40 + IDR 624,600.00)

### **4.4 Statement of Financial Position**

INADIS total assets were IDR 72,997,500.00 as of 31 December 2022. Current liabilities are made up largely of account payables. Due to the low level of accounts receivables, accounts payables have been increasing. As of 31 December 2022, Amount of Account Payable re minusached IDR 718,085,472.00 (shareholder's loan). Therefore Amount of Current Liabilities equals to IDR 718,085,472.00. INADIS Net Asset is minus IDR 542,296,632.83, whereby the net asset end of the year is minus IDR 152,719,616.40. Therefore, INADIS' Amount of Net Assets equals to minus IDR 695,016,249.23

**Table 1: Statement of Financial Position Per 31 December 2022****Income from Events**

<b>No</b>	<b>Date</b>	<b>Event</b>	<b>Revenue (IDR)</b>
1	18 Nov 2022	Distraksi III: In collaboration with the Directorate General of Education, Culture, Research, and Technology conducted a seminar to foster a deeper understanding of Mentawai Culture	IDR 56,997,500.00
2	12 Dec 2022	Refund from Mbloc	IDR 5,000,000.00
2	22 Dec 2022	Contribution from Ibu Brigitta	IDR 10,000,000.00
3	24 Dec 2022	Contribution from Bpk Makarim Wibisono	IDR 1,000,000.00
		<b>TOTAL</b>	<b>IDR 72,997,500.00</b>

**Table 2: Income (Loan) from Shareholders**

<b>No</b>	<b>Month</b>	<b>Loan (IDR)</b>
1	January	IDR 11,000,000.00
2	February	IDR 10,001,330.00
3	March	IDR 16,278,034.00
4	April	IDR 15,010,952.00
5	May	IDR 11,200,000.00
6	June	IDR 9,000,000.00
7	July	IDR 18,000,000.00
8	August	IDR 14,260,927.00
9	September	IDR 14,004,806.00
10	October	IDR 17,400,000.00
11	November	IDR 22,754,806.00
12	December	IDR 7,988,040.00
	Total 2021 Contribution	IDR 166,898,895.00
	Existing Contribution (Dec 2022)	IDR 11,000,000.00
	Total Shareholder's Contribution (2021-2022)	IDR 177,898,895.00

**YAYASAN INADIS**  
**Balance Sheet**

The end of 31 December 2022

Description	31 December 2022
<b>Assets</b>	
<b>Current Assets</b>	
<b>Cash and Bank</b>	
Current Assets	23,069,222.77
Cash and Bank	23,069,222.77
Petty cash	562,700.00
Bank	22,506,522.77
Amount of Cash and Bank	<u>23,069,222.77</u>
<b>Account Receivable</b>	
Amount of Account Receivable	<u>0.00</u>
<b>Inventory</b>	
Amount of Inventory	<u>0.00</u>
<b>Other Current Assets</b>	
Amount of Other Current Assets	<u>0.00</u>
Amount of Current Assets	<u>23,069,222.77</u>
<b>Fixed Assets</b>	
<b>Historical Value</b>	
Amount of Historical Value	<u>0.00</u>
<b>Accumulated Depreciation</b>	
Amount of Accumulated Depreciation	<u>0.00</u>
Amount of Fixed Assets	<u>0.00</u>
<b>Other Assets</b>	
Amount of Other Assets	<u>0.00</u>
Amount of Assets	<u>23,069,222.77</u>
<b>Liabilities and Net Assets</b>	
<b>Liabilities</b>	
<b>Current Liabilities</b>	
<b>Account Payable</b>	
Loan - Owner	718,085,472.00
Amount of Account Payable	<u>718,085,472.00</u>
<b>Other Current Liabilities</b>	
Amount of Other Current Liabilities	<u>0.00</u>
Amount of Current Liabilities	<u>718,085,472.00</u>
<b>Long Term Liabilities</b>	
Amount of Long Term Liabilities	<u>0.00</u>
Amount of Liabilities	<u>718,085,472.00</u>
<b>Net Assets</b>	
<b>Net Assets</b>	542,296,632.83
Unrestricted Net Assets	11,394,000.00
Accumulation of Net Assets	-
Net Assets end of Years	<u>152,719,616.40</u>
Amount of Net Assets	<u>695,016,249.23</u>
Amount of Liabilities and Net Assets	<u>23,069,222.77</u>

**YAYASAN INADIS**  
**Statement of Income, Expenses and Net Assets**

Per 1 January 2022 until 31 December 2022

Description	1 Jan 2022 - 31 Dec 2022
<b>Income</b>	
Grants/Funding	72,997,500.00
Training/Workshops/Seminars/FGD	72,997,500.00
Cash Advance	72,997,500.00
Other Services Rendered	-
Cash Advance	-
<b>Amount of Income</b>	<b>72,997,500.00</b>
<b>Cost of Goods Sold</b>	
<b>Amount of Cost of Goods Sold</b>	<b>0.00</b>
<b>Gross Income</b>	<b>72,997,500.00</b>
<b>Operational Expenses</b>	
Project Expense	57,460,977.00
Project Incentive	57,460,977.00
Operation Expenses	167,631,489.40
Admin and General	151,644,934.40
Computer/Software Customization	-
Miscellaneous Expense	-
Salary & Allowance	130,450,000.00
Salary	124,950,000.00
Payroll	124,950,000.00
Operational Expense	-
THR	5,500,000.00
Phone Voucher	3,800,000.00
Domain Subscription	17,394,934.40
Office Supplies & General	9,722,555.00
Office Stationery	342,555.00
Photocopy / Binding	344,000.00
Refreshment for In-house meeting	4,031,900.00
Courier expense	604,500.00
Miscellaneous Transportation expense	4,399,600.00
Marketing	6,264,000.00
Client Meeting_01 - Transportation, hospitality	3,600,000.00
Marketing merchandise	2,664,000.00
<b>Amount of Operational Expenses</b>	<b>225,092,466.40</b>
<b>Operating Income</b>	<b>152,094,966.40</b>
<b>Other Income and Expenses</b>	
Other Income	
Amount of Other Income	
Other Expenses	
Other Expenses	624,650.00
Stamp Duty	-
Bank Admin and Charges	624,650
Rounding	0.00
Amount of Other Expenses	<b>624,650.00</b>
<b>Amount of Other Income and Expenses</b>	<b>624,650.00</b>
<b>Amount of Net Assets ( Before Tax)</b>	<b>152,719,616.40</b>
<b>Amount of Net Assets (After Tax)</b>	<b>152,719,616.40</b>



## 5. NETWORK EXPANSION

### 5.1. COOPERATION OF INADIS WITH FISIPOL THINKERS CLUB UNIVERSITAS KRISTEN INDONESIA (UKI) – Media Partner for the 2<sup>nd</sup> Asia-Pacific Conference Universitas Kristen Indonesia

The 2<sup>nd</sup> Asia-Pacific Conference was an opportunity event for national and international students where the students can get some best strategic ideas and innovative solutions to build sustainable development across the territories in Asia-Pacific countries. This event provided various sub-themes such as security, law and governance, social economy, and environment. INADIS was a part of media partner for this event that was held on 30 August 2022.

**ASIA-PACIFIC CONFERENCE 2**  
**Sustainable Development in Indo-Pacific**  
**30 August 2022**

**CONFERENCE SPEAKERS :**

**KEYNOTE SPEAKER:**  
**Yanuar Nugroho, Ph.D**  
Coordinator of Expert Team at National SDGs Secretariat of Indonesia Bappenas

**Dr. Gautam Kumar Jha**  
Associate Professor  
Jawaharlal Nehru University,  
India

**Dr. Bruce Miyake**  
Resident Legal Advisor for the United States Department of Justice's Overseas Prosecutorial Development Assistance and Training

**Dr. Marecon C. Viray**  
Associate Professor,  
Mindanao State University,  
The Philippines

**OPENING REMARKS:**  
**Dr. Dhaniswara K. Harjono, SH. MH. MBA**  
Rector of Universitas Kristen Indonesia

**Cecep Effendi, MPhil. Ph.D**  
Director General Centre on Integrated Rural Development for Asia and the Pacific & Associate Professor in Political Science, Universitas Muhammadiyah Jakarta

**Angel Damayanti, Ph.D.**  
Director - Center for Security and Foreign Affairs Studies, Universitas Kristen Indonesia

**Hybrid Event**  
Location : Graha William Soeryadjaya UKI  
Platform : Zoom Meeting  
Time : 08.00 - 12.00 GMT +7

**Free Registration**  
**Registration Link**  
[bit.ly/APCWebinarRegistration](https://bit.ly/APCWebinarRegistration)

**CONTACT US FOR FURTHER INFORMATION**  
Josephine +62 812-9906-9944 Meltin +62 823-7084-3465

**MEDIA PARTNERS :**

## 5.2. MOU Between INADIS and Universitas Nahdlatul Ulama Kalimantan Timur

PRESS RELEASE



**INADIS MENANDATANGANI KERJA SAMA DENGAN  
UNIVERSITAS NAHDLATUL ULAMA KALIMANTAN TIMUR**

Pada tanggal 23 November, INADIS telah menandatangani nota kesepakatan kerjasama dengan Universitas Nahdlatul Ulama Kalimantan Timur. Kesepakatan ditandatangani secara simbolik dan virtual oleh kedua belah pihak. Kerjasama ini diharapkan dapat membuahkan gagasan-gagasan baru serta dapat berkontribusi baik untuk akademik dan masyarakat.

[inadis.org](http://inadis.org)    [@inadisfoundation](https://www.instagram.com/inadisfoundation)    [Indonesian Institute of Advanced International Studies](https://www.facebook.com/IndonesianInstituteofAdvancedInternationalStudies)

INADIS & Universitas Nahdlatul Ulama Kalimantan Timur proudly signed a cooperation agreement on joint publication and research. Through this cooperation, both sides are hopeful this agreement will produce new ideas and also can increase the contribution to academic and society.

## **5. PUBLICATION**

### **5.1 INADIS ANTHOLOGY**

INADIS Anthology is a biannual bulletin of public policy and international affairs research. The bulletin is produced to share our work as well as other external contributors' writings to the general public. In 2022, INADIS published 2 anthologies under the title 'Global Perspectives on Global Issues' and 'Transborder Movement'.

### **5.2 INADIS BRIEF**

INADIS Brief is a weekly summary of world news. It covers news across Africa and the Middle East, Asia, Australia & Oceania, Europe, Latin America & the Caribbean, and the United States & Canada. It aims to increase the awareness of the Indonesian people about the current political, economic and social situation around the world that may have an impact on Indonesia.

How INADIS Brief works:

- Search news sources spanning Africa and the Middle East, Asia, Australia & Oceania, Europe, Latin America & the Caribbean, and the United States & Canada.
- Summarizing the content of the news using your language at least three sentences.
- The content of the news includes 5W+1H along with the link to the news source.

This Brief is uploaded to INADIS website alongside with our social media/Instagram. For more details, please visit <http://www.inadis.org/inadis-brief>.

### **5.3 INADIS BLOG**

INADIS Blog is one of the organisation's products. It provides timely ideas, thoughtful reflections, and in-depth research on themes related to international political economy, area studies, and strategic studies. In 2022, INADIS wrote thirteen articles under various themes across the globe.